

TFL 44 Integrated Resource Management Plan

February 13, 2025
TPAG Presentation

C'AWAK ?QIN
FORESTRY

WHAT IS AN INDIGENOUS-LED INTEGRATED RESOURCE MANAGEMENT PLAN (IRMP)?



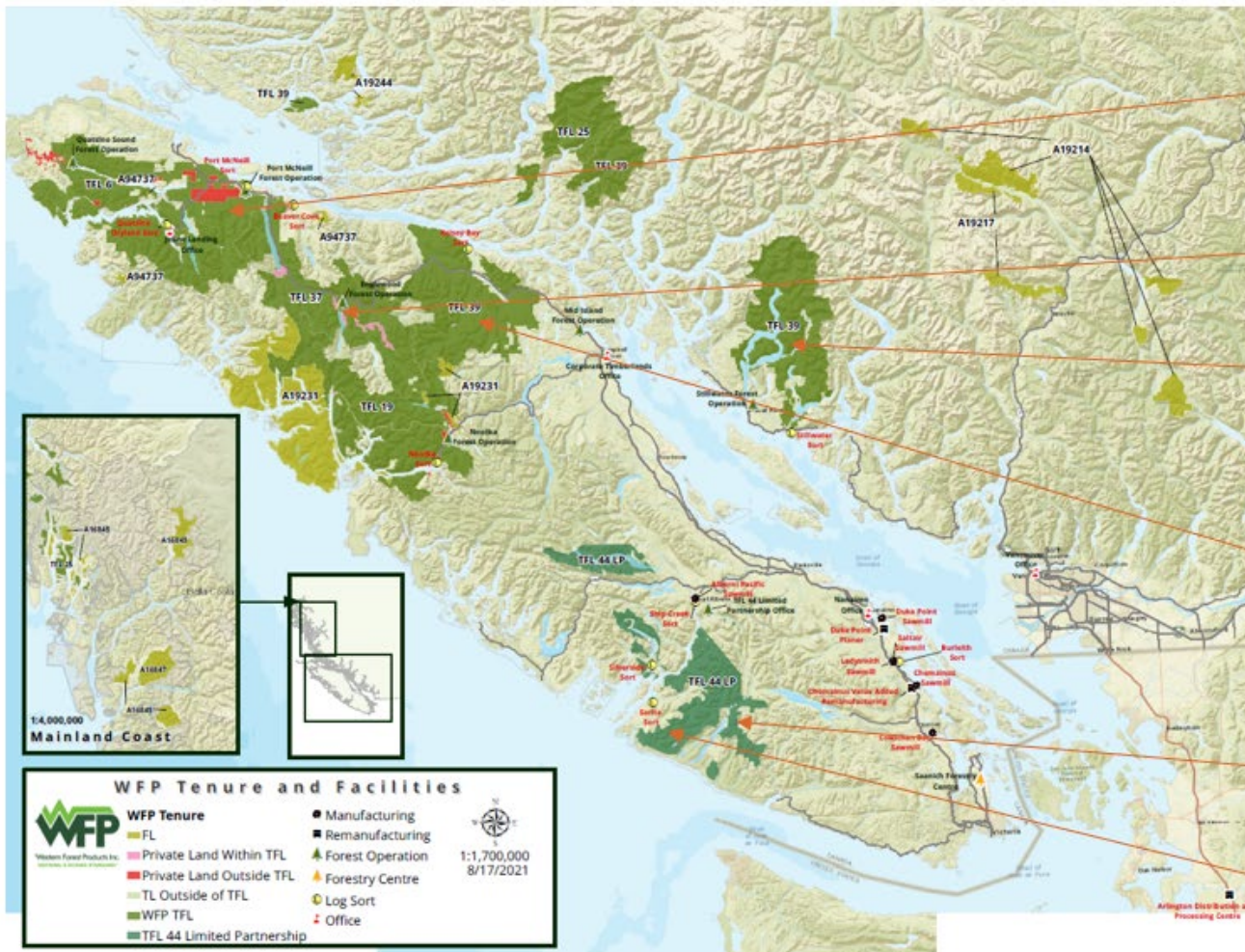
HOW DOES AN IRMP FIT INTO THE FRAMEWORK FOR FOREST MANAGEMENT, RECONCILIATION & UNDRIP?



HOW IS THE IRMP DEVELOPED?



Integrated Resource Management Planning



QUATSINO
FIRST NATION



'NAMGIS
FIRST NATION



Tla'amin Nation
ᑕᓐᓂᓐᓂᓐ ᑕᓐᓂᓐ



huyayaht
ANCIENT SPIRIT, MODERN MIND



C'AWAK ?QIN

A Values Based Approach



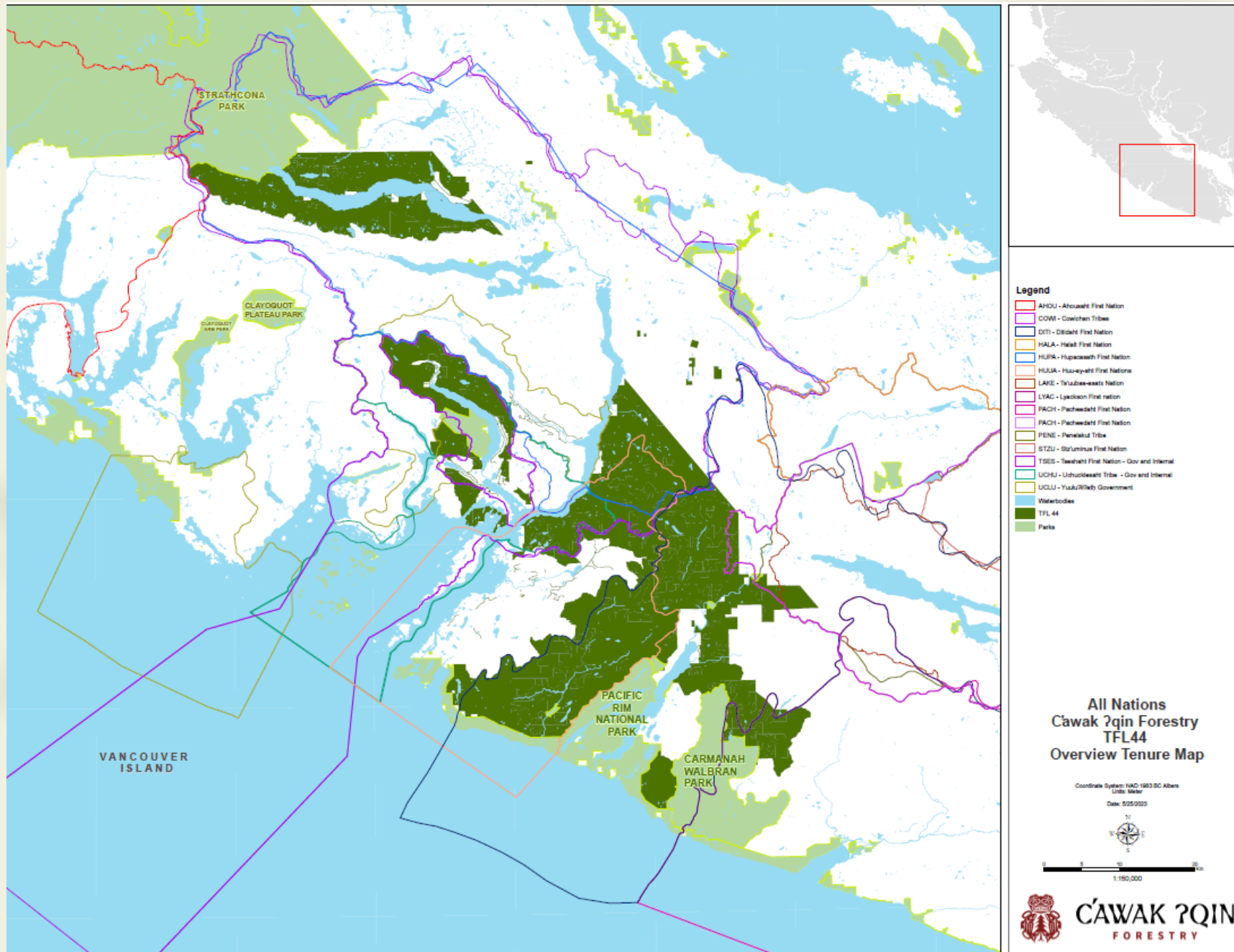
C'AWAK ?QIN
FORESTRY

The Vision

- ◀●▶ One Integrated Resource Management Plan for TFL 44
 - ◀●▶ Informed by values from all participating Nations
 - ◀●▶ Framework based on Nations' IRMP experience
 - ◀●▶ Guided by protocol for collaborative integration of Nations values and priorities
 - ◀●▶ Comprehensive plan that is inclusive of the harvest pattern that results from the stewardship of values fully leveraging the benefit of area based tenure

Deliver a near - term, implementable plan that includes clear outcomes over multiple generations, as a basis for a shared recommendation to the Province supporting decision making over TFL area





TFL 44

120,970 ha

within the Territories
of 14 First Nations

Ahousaht

Cowichan

Ditidaht

Halalt

Hupacasath

Huu-ay-aht

Lyackson

Pacheedaht

Penelakut

Stz'uminus

Tseshaht

Ts'uubaa-asatx

Uchucklesaht

Yuut u?il?at h



C̓AWAK ʔQIN
FORESTRY

44 IRMP Protocol - Timelines

Deliverable	Responsibility	Target Completion Date
Review Nation's land management documents and community plans	Nation Representatives and 44IRMP Tech Team	Winter 2024/25
Complete values and desired outcome discussion	Nation Representatives and 44IRMP Tech Team	Winter 2024/25
Prepare draft values table and proposed stewardship strategies, indicators and outcomes	44IRMP Tech Team	Spring 2025
Plan progress review	Nation Representatives and 44IRMP Tech Team	Spring 2025
Open House to share progress	44IRMP Tech Team	Spring 2025
Modelling of outcomes	44IRMP Tech Team	Spring 2025
Refine plan based on feedback model outcomes	44IRMP Tech Team	Summer 2025
Share modelling outcomes and plan updates and get feedback	Nation Representatives and 44IRMP Tech Team	Summer 2025
Draft 44IRMP Report ready for Nation representative review	Nation Representatives and 44IRMP Tech Team	Fall 2025
Draft 44IRMP ready for Nation leadership review	Nation Representatives and 44IRMP Tech Team	Fall 2025
Confirm version of 44IRMP to be shared with Province	Nation Council and Cawak ?qin Board	Winter 2025/26

Current State - Engagement

Nation	TFL 44 Engagement
Huu-ay-aht First Nation	Active Participant – the jointly developed HIRMP covers Territory within TFL44 and will inform the 44IRMP process
Hupacasath First Nation	Active Participant - Protocol Signed and Values Discovery Complete
Uchucklesaht Tribe	Active Participant- Working on Draft Conservation Network, exploring Stewardship Strategies in preparation for Modelling
Pacheedaht First Nation	Active Participant – Working on Draft Conservation Network exploring Stewardship Strategies in preparation for Modelling
Tseshaht First Nation	Actively Engaging - Protocol with Chief Watts, Document review in progress.
Ditidaht First Nation	Actively Engaging – Planning engagement meeting with Ditidaht Council.
Cowichan Tribes	Actively engaged
Stz'uninux First Nation	Actively engaged
Lyackson First Nation	Actively engaged
Ts'uubaa-asatx Nation	Agreed on info sharing and review process
Yuutu?il?ath First Nation	Agreed on info sharing and review process
Halalt First Nation	Invited - ongoing efforts to engage
Penelakut Tribe	Invited – ongoing efforts to engage
Ahousaht First Nation	Invited – ongoing efforts to engage



Values Discovery

- ✧(●)✧ Identifying what is important and building from it
- ✧(●)✧ Sharing standards and current practices
- ✧(●)✧ Findings
 - ✧(●)✧ Commonality
 - ✧(●)✧ Regionality
 - ✧(●)✧ Everything is Connected

What is a Conservation Network

Conservation Networks:

- ↔ Spatialization of values
- ↔ One element of an integrated, connected approach to stewardship.
- ↔ Landscape component of Variable Retention.
- ↔ Values driven but meets or exceeds BC's legal targets including marbled murrelet order.
- ↔ Values serve as landscape anchors.
- ↔ Finer scale mapping through use of LiDAR models.
- ↔ Draft conservation networks will be brought into modelling to help inform the evaluation of the future forest condition.
- ↔ Once finalized, Old Growth Management Areas and Wildlife Habitat Areas will be delineated within the Conservation Network.

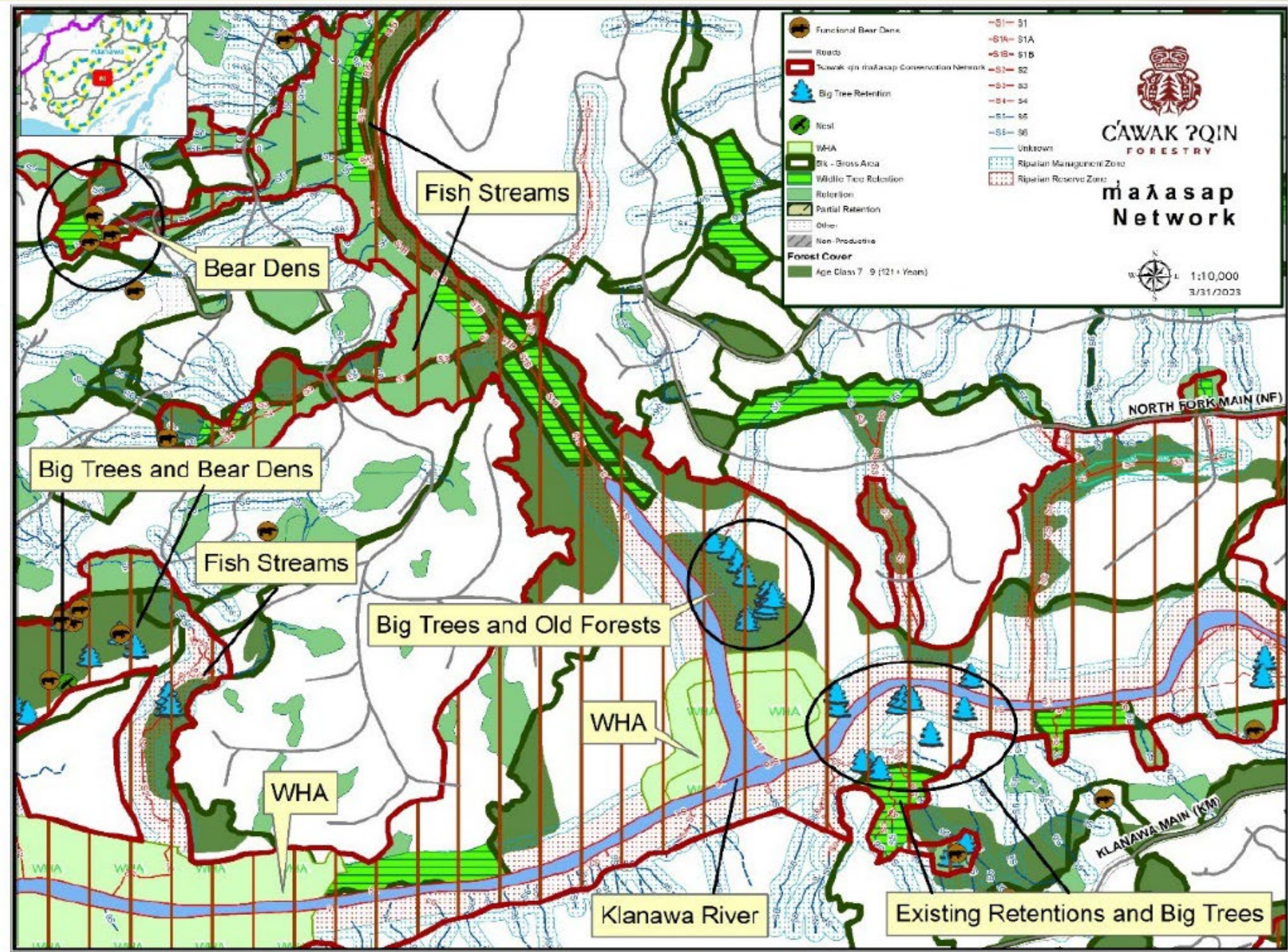


Values Considered

- Riparian/fish habitat
 - Includes floodplains, key fans, and sensitive terrain
- Elk
- Cedar
- Cultural sites, features, cultural and medicinal plants
 - Limited data
- Old forest
- Connectivity
- Rare ecosystems
- Big trees
- Deer
- Black bear dens
- Eagle nests
- Species at Risk
 - Marbled murrelet
 - American Goshawk



C'AWAK ?QIN
FORESTRY



Next Steps

- ✦●✧ Create the Base Model – Patchworks
- ✦●✧ Draft Future Forest Outcomes and Stewardship Strategies
- ✦●✧ Discussions with Provincial Government on IRMP and FLP

Our Real Opportunity

- ✦•✧ Utilize best available spatial and temporal modelling to visualize the connected outcome 300 years into the future inclusive of the resulting harvest pattern enabling informed decisions
- ✦•✧ Bring the predictability and certainty for all parties through a comprehensive approach to planning
- ✦•✧ One plan that can inform multiple government policy objectives and legislative plans in an efficient, effective, and connected way



Forest Landscape Plan

Forest and Range Practices Act

The chief forester, in preparing a forest landscape plan, must consider the following objectives:

- (a) supporting the production and supply of timber in forest landscape area ;
- (b) supporting the protection and conservation of the environment ;
- (c) managing the values placed on forest ecosystems by Indigenous peoples;
- (d) managing the values placed on forest ecosystems by local communities ;
- (e) preventing, mitigating and adapting to impacts caused by significant disturbances to forests and forest health, including wildfire, insects, disease and drought.

the

